

THOMAS & WILLIAMS

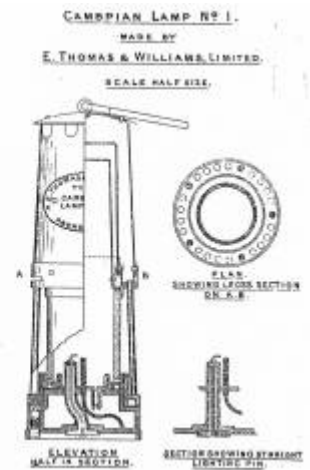
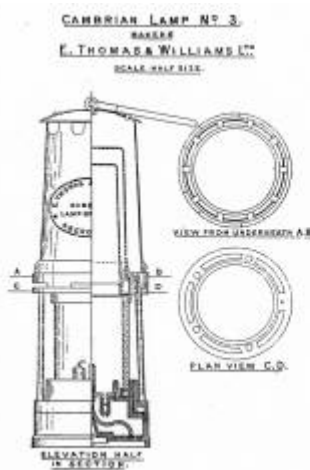
Bonneted Clanny Lamp



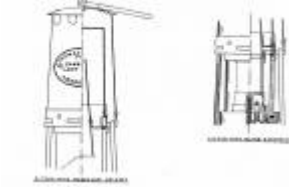
Nr. 1



Catalog Nr. 1 / 3



Name: E. Thomas & Williams, Limited. 1913
Design: 1000
No. of copies: 1000
Date: 1913
Description: Brass mining lamp, specially designed for use in coal mines, and adapted to carry a lamp. It is made in two parts.
Materials: Brass, steel, iron wire, vertical and horizontal tubes.
Dimensions: Overall height 10 1/2 in. Diameter of top 4 1/2 in. Diameter of bottom 4 1/2 in. Weight 1 1/2 lb. No. of lamps 1000.
Inventions: Brass, wire, vertical and horizontal tubes.
Notes: Each lamp is stamped with the name, E. Thomas & Williams, Limited, and the number of the lamp.
Lamp: No. 1000
No. of lamps 1000
1913 May have a general design for 1 lamp for use in coal mines, and adapted to carry a lamp. It is made in two parts.
E. THOMAS & WILLIAMS, LTD.



E. Thomas & Williams Brass mining lamps - today Diese Lampe wird heute noch als Geschenklampe verkauft.

MIDGET



Modell G 2





Lady Windsor Colliery (Photo John Dawson)

[Back to Mining lamps UK](#)

[Wetterlampen](#)

From:

<https://karl-heupel.de/dokuwiki/> - **KarlHeupel**

Permanent link:

https://karl-heupel.de/dokuwiki/doku.php?id=grubenlampen:thomas_williams

Last update: **2020/03/26 11:30**

